

Choose  
your style!



CYCLING IN THE  
OULU REGION



CYCLING IN THE  
OULU REGION



# IN COOPERATION

City of Oulu  
Kempele Municipality  
MuhoS Municipality  
Ii Municipality  
Tyrnävä Municipality  
Liminka Municipality  
Lumijoki Municipality  
North Ostrobothnia ELY Centre

Photography Valtteri Kantanen

# WE WANT TO MAKE CYCLING MORE VISIBLE!

The main cycling routes in the Oulu region are made visible and distinct from regular cycleways. The main routes are waymarked and numbered, and signs with maps and distances between destinations are mounted along the routes. The slogan for cycling in the Oulu region is: Choose your style! This brochure gives information about the main cycling routes and the diversity of cycling in Oulu: it does not matter whether you sport a cruiser, mountain bike or a pink Jopo. You do not need special gear to cycle. Instead, you can cycle barefoot or with your boots on and with or without a helmet. The most important thing is that you cycle.

New signs will be mounted along the main routes in 2019! Try the new routes and visit the sights nearby.

Harri Vaarala  
Traffic engineer  
City of Oulu

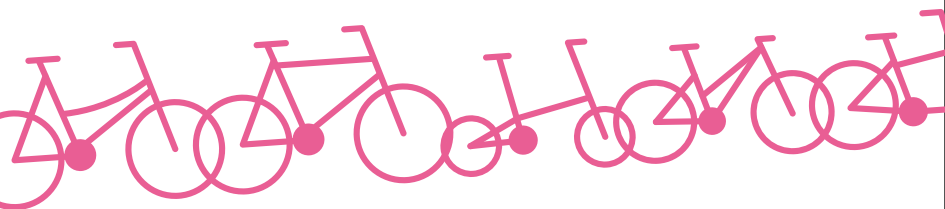
**Cycling improves your physical condition and is an eco-friendly mode of transportation...**

**But in the Oulu region cycling is something much more. In Oulu, all styles of cycling are allowed.**

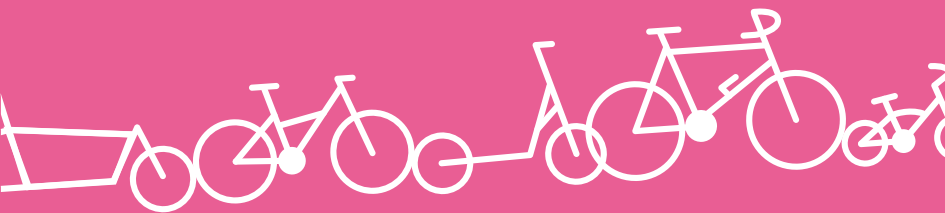
**You can exercise or you can cycle just for fun – there is no need to stress about proper gear or fancy bike models!**

**Cycling is a natural part of the all-year-round lives of Oulu citizens.**

**Choose your style and stay safe!**



# MAIN CYCLING ROUTES





People in the Oulu  
region cycle more  
than anywhere in  
Finland



## MAIN ROUTE 1

1

# Oulu-Haukipudas

21 km

The route starts at the Market Square and passes over the Tervaporvari bridges in the Oulujoki river delta. From Hartaanselkä beach, the route continues through Toppila, Taskila, Rajakylä, Pateniemi, Herukka and Kello neighbourhoods to Haukipudas. For the most part, the route is a shared pedestrian and bicycle way. Some parts of the route are local roads suitable for both walking and cycling. The route serves as a great connection to Raatti Sports Centre, Kuusisaari island and Virpiniemi in Haukipudas.

A way towards north



## MAIN ROUTE 2

# Oulu-Linnanmaa-Ritaharju

8,8 km

The route, which starts at the Market Square, travels over the Tervapori bridges towards Tuira and onwards from Alppila, Isko and Syynimaa neighbourhoods to Linnanmaa. From Linnanmaa, the route takes the cyclist to Ritaharju through Kuivasranta. The 5-kilometer-long section between the Market Square and Linnanmaa will be improved into a top-level bike lane in 2019. The other parts of the route consist of shared pedestrian and bicycle ways.

In Isko and Syynimaa, the route passes through green areas. The connection from the city centre to Linnanmaa is thus shorter for cyclists and pedestrians than for cars and other vehicles. The route takes the cyclist past Raatti Sports Centre, Kuusisaari island, Linnanmaa campus and Ideapark shopping centre.

Shortcut from the city centre to Linnanmaa

**3****MAIN ROUTE 3****Oulu-Kaijonharju****6,0 km**

The route starts at the Rotuaari pedestrian zone, passes through Tuira, Välivainio, Puolivälinkangas, Pyykösjärvi and Linnanmaa and ends at Kaijonharju. Main route 3 is an option for Main route 2 from the city centre to Linnanmaa. The route is diverse: the inspiring Ainolanpuisto park and the Patosilta bridge are located between Rotuaari and Tuira, Puolivälinkangas and Tuira have apartment house areas, and in Välivainio, the traveler is taken through a residential district with old wooden houses. Pyykösjärvi offers a glimpse of beautiful Finnish lake scenery.

Main route 3 mainly consists of shared pedestrian and bicycle ways. A short section in the city centre has separate bike and pedestrian lanes. In Välivainio, the route goes along a local road suitable for both walking and cycling. The route takes the cyclist past Hupisaaret Islands City Park, the upstream gates of the Merikoski power plant, Tuira beach and Linnanmaa campus.

**Oulu at its best**

In Oulu region, the share of cycling as a transport mode is 21 % during summer and 9 % during winter



## MAIN ROUTE 4

4

# Oulu-Kiiminki

21 km

The route, which begins at the Rotuaari pedestrian zone, travels through the scenic Ainolanpuisto park and over Patosilta bridge towards Eastern Tuira, from which it continues through Kynsilehto, Huonesuo, Talvikangas, Hönttämäki, Korvenkylä, Välikylä and Jääli to Kiiminki. A section of the route goes along the Kuusamontie road (national road 20). The route also passes some residential areas.

The majority of the route consists of shared pedestrian and bicycle ways. There are also some short sections that follow local roads suitable for cycling and walking. As you ride along, you will pass by the Hupisaaret Islands City Park, the upstream gates of Merikoski power plant, Tuira beach and Jäälinjärvi Lake. The near-pristine Koitelinkoski rapids is situated about 4 kilometers away from the route in Kiiminki.

You can enjoy the beachfront and the sounds of running water along this route



## MAIN ROUTE 5

5

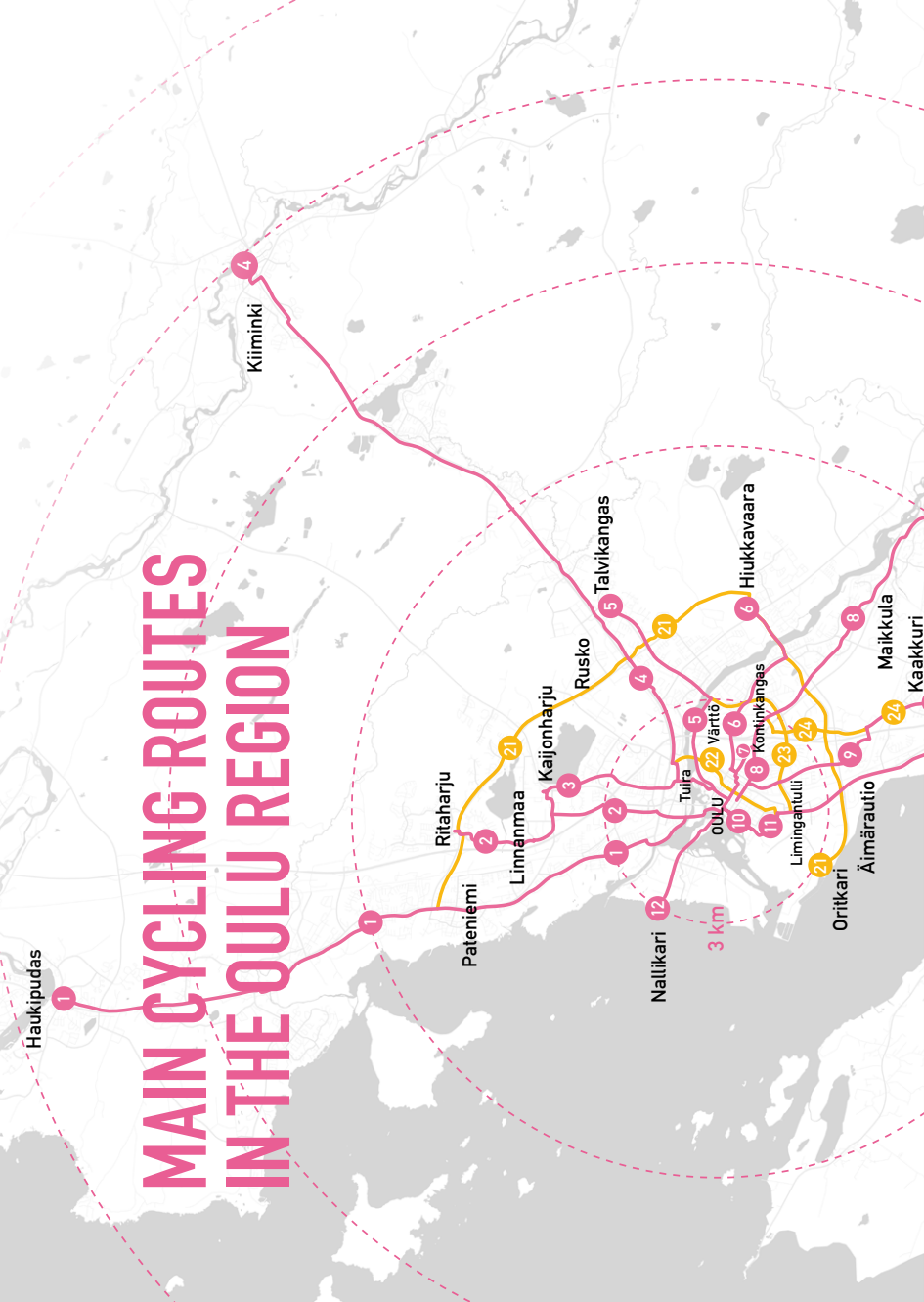
# Oulu-Talvikangas

7,8 km

The route from Rotuaari to Talvikangas travels along the beautiful Oulunjoki river in Myllytulli and Värtö to Erkkolansilta bridge and onwards to Haapalehto, Rannanperä and Talvikangas. Apart from some short sections Rannanperä that travel along local roads suitable for both walking and cycling, the route is made of shared pedestrian and bicycle ways. The route passes by the art museum, Koskenniska and Värtö beach.

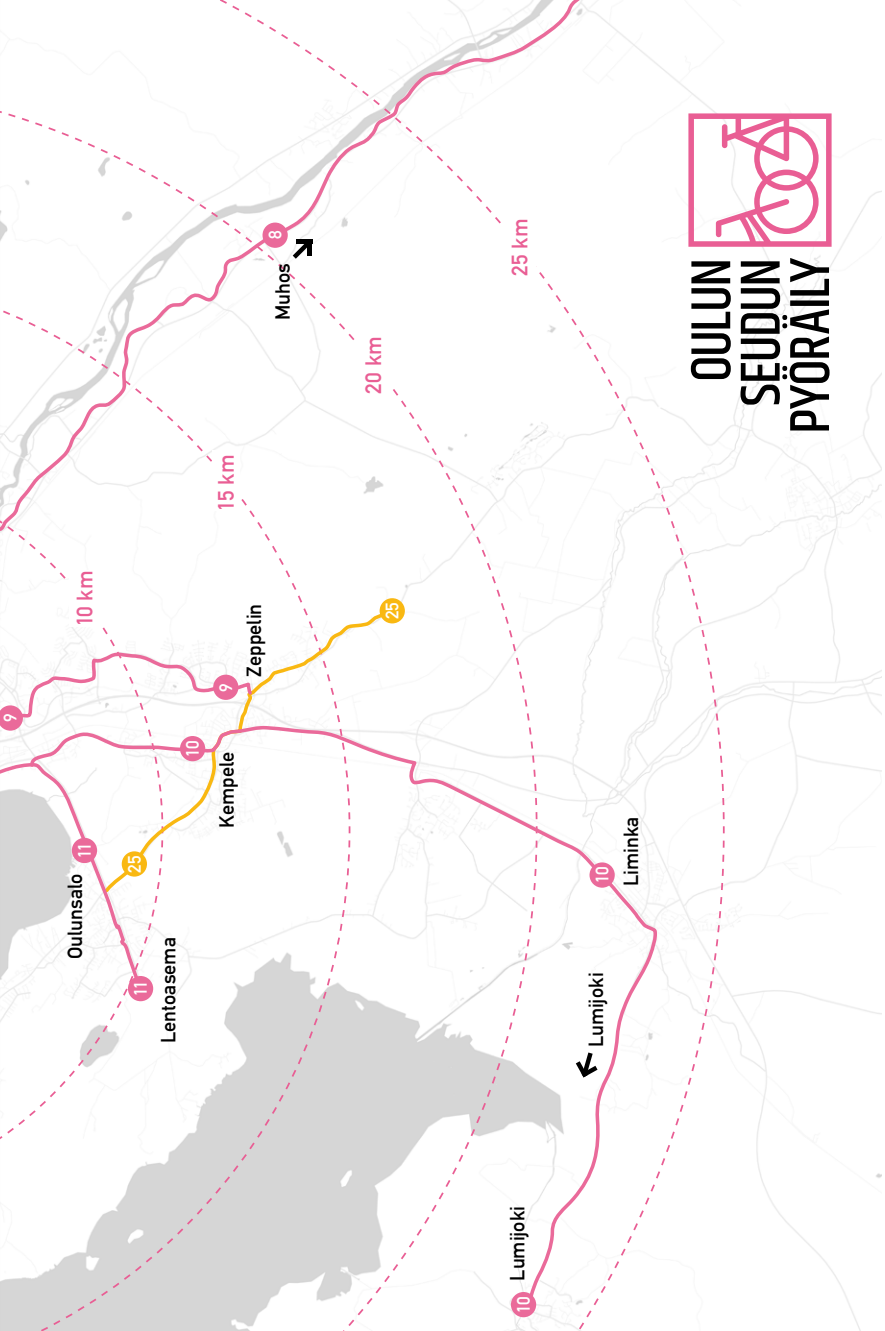
Beautiful route for daytrips

# MAIN CYCLING ROUTES IN THE OULU REGION





# OULUN SEUDUN PYÖRÄILY





## MAIN ROUTE 6

# Oulu-Hiukkavaara

7,6 km

This route, starting at the Rotuaari pedestrian zone, follows the Pakkahuoneenkatu bike lane to the railway station and onwards to Raksila. From Raksila, the route goes along Kajaanintie and Torpantie roads to the Poikkimaantiensilta bridge over Oulujoki river, from which the route continues to the centre of Hiukkavaara neighbourhood. Kajaanintie road has separated ways for pedestrians and cyclists. Torpantie is a local road suitable for both walking and cycling.

The rest of the route consists of shared pedestrian and bicycle ways. The route passes by the railway station, Raksila supermarkets, Oulu City Hospital and Oulu University Hospital.

**Straightest way to Hiukkavaara**



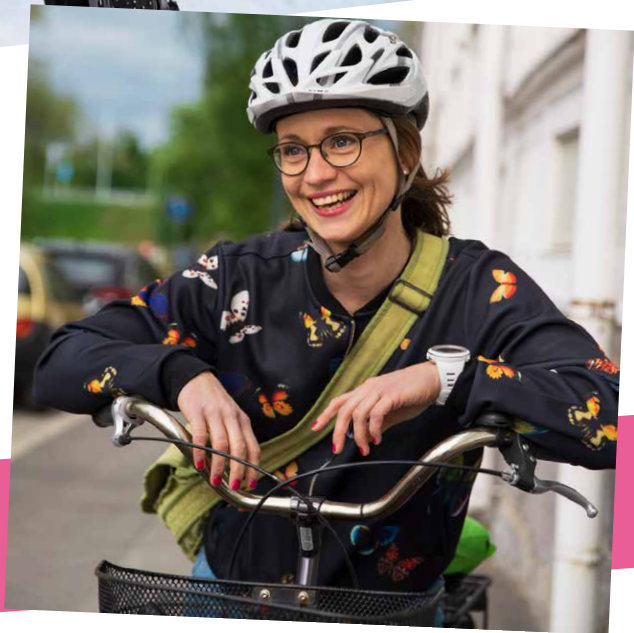
**MAIN ROUTE 7**

# **Kauppatori-Kontinkangas**

**2,6 km**

This route from the Market Square to Kontinkangas travels along the bike street in Rotuaari to the railway station and onwards to Raksila Sports Centre and Kontinkangas. From the railway station to Kontinkangas the route is a shared pedestrian and bicycle way. Oulu hospitals and several business districts are situated in Kontinkangas. Furthermore, the route passes by Rotuaari, the railway station, Raksila supermarkets, Oulu Ice Hall, Oulu Swimming Pool, Baseball Stadium and Oulu Hall.

**Swimming, Finnish baseball and many other sports within a biking distance!**





## MAIN ROUTE 8

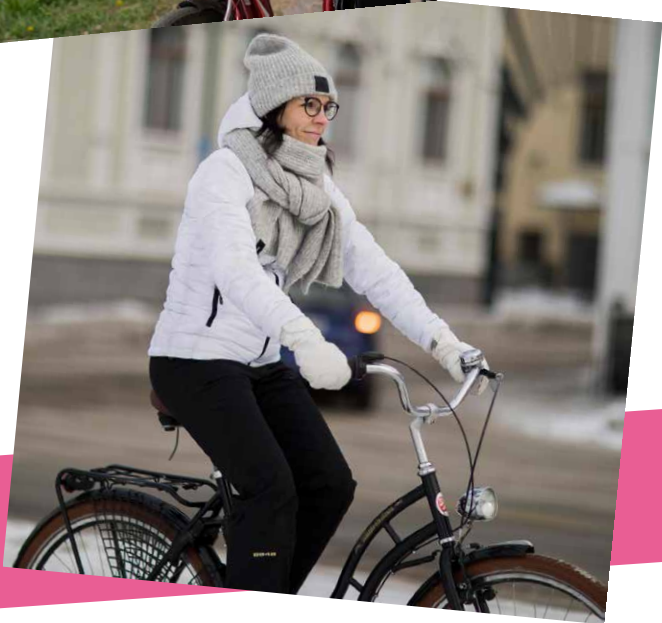
# Oulu–Maikkula–Muhos

36 km

The route starts at Isokatu street and takes the cyclist along Saaristonkatu and Kainuuntie (national road 20) to Kontinkangas, Maikkula, Madekoski, Pikkarala and Laukka neighbourhoods and onwards to Muhos. The route has separate bike lanes and pedestrian ways between Mäkelininkatu street and Raksila neighbourhood in Oulu.

Elsewhere, the route goes along shared pedestrian and bicycle ways, local roads and private roads. In Madekoski, Pikkarala and areas north to Laukka, there are private gravel roads that can be used by both cyclists and pedestrians. These roads are a safer option than walking or cycling on the roadway of national road 22. The route passes nearby the Turkansaari outdoor museum.

Add a dose of history and culture  
to your workout!





## MAIN ROUTE 9

# Oulu-Kaakkuri-Zeppelin

16 km

The route starts from the Isokatu street and goes through the Karjasilta, Höyhtyä, Mäntylä and Kaakkurinkangas neighbourhoods to Kaakkurintori and Metsokangas. The route continues from Metsokangas to Zeppelin Shopping Centre in the Kempele municipality through Linnakangas and Kokkokangas. The first bike-path-level bikeway in the Oulu region goes from Zeppelin Shopping Centre all the way to Kempele municipal centre. The rest of the route consists of shared pedestrian and bicycle ways. Saaristonkatu road in Oulu, however, has separate lanes for cyclists and pedestrians.

The route passes by the shopping centres in Kaakkuri and Zeppelin and various educational institutions, such as Pohjankartano school and its music centre, Kaakkuri and Metsokangas schools in Oulu, and Linnakangastalo and Ylikylä schools in Kempele.

Stop by a shopping centre!

## MAIN ROUTE 10

10

# Oulu-Kempele- Liminka-Lumijoki

38 km

This route, which crosses several municipal borders, starts at the Market Square and travels through Meritulli and the Hollihaka and Heinäpää green paths to Limingantulli. The route continues onwards through Oulunlahti and Hakamaa to Kempele. The section between the Market Square and Lentokentäntie road is joint with route 11 to Oulunsalo. From Kempele, the route passes by the railway station, Tupos and Liminka, from which it continues all the way to Lumijoki.

For the most part, the route consists of shared pedestrian and bicycle ways. In Oulunlahti and Perävainio, the route travels along local roads suitable for both walking and cycling. In Kempele, the route follows a top-level bike lane for one kilometer. The route passes the Hollihaka green area, Heinäpää sports centre, Limingantulli shopping centre, harness racing track and the municipal centers of Kempele, Liminka and Lumijoki. In Liminka, the route passes by the Rantakylä recreation area and Liminganlahti nature centre.

Birds and bays

## MAIN ROUTE 11

11

# Oulu-Oulunsalo- Lentoasema

14 km

This route, starting at the Market Square, takes its travelers through Meritulli and the Hollihaka and Heinäpää green paths to Limingantulli. The route continues onwards through Oulunlahti, Vihiluoto and Oulunsalo to the airport. The section between the Market Square and Lentokentäntie road is shared with route 10 to Lumijoki.

For the most part, the follows a shared pedestrian and bicycle way, but there are also sections that follow local roads suitable for both walking and cycling in Oulunlahti and Rantavainio. The route passes Hollihaka green area, Heinäpää sports centre, Limingantulli shopping centre, harness racing track, the municipal centers of Kempele, Liminka and Lumijoki. In Liminka, the route passes the Rantakylä recreation area and all the services in Oulunsalo.

For the sports enthusiast



There are more than  
1000 kilometers of  
cycleways in the Oulu  
region

12

MAIN ROUTE 12

## Oulu-Nallikari

3,4 km

This route starts at Rotuaari, travels through the Market Square and the beautiful and relaxing Pikisaari island and ends at the Nallikari recreation area and holiday village in Hietasaari. Hietasaari offers diverse recreational activities and accommodation possibilities. The route offers the possibility to enjoy the beautiful scenery of coastal Oulu, the historic Pikisaari island and various green areas and bridges.

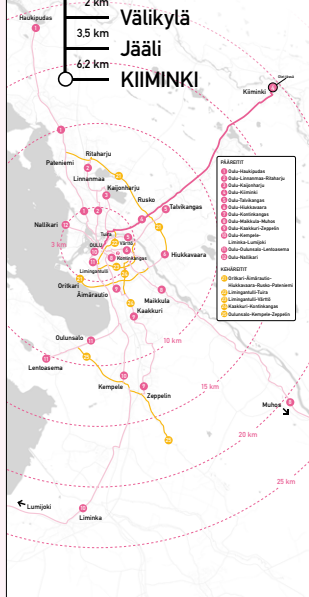
The route travels along a shared bike and car road between Rotuaari and Kauppari. The rest of the route follows a shared pedestrian and bicycle way. There are pedestrian and bicycle bridges on the route, which makes the distance to both Pikisaari and Nallikari much shorter on foot or by bike than by car.

Ride a bike to the Riviera of the North



4

OULU 21 km



4

KIIMINKI 20 km



4

# WAYFINDING ALONG THE MAIN CYCLING ROUTES IN THE OULU REGION

Signs and guideposts – designed according to the brand guidelines – help the cyclists find their way along the numbered main routes. The blue-and-white cycling signs also support orientation. Numbers 1-12 are reserved for the main routes towards the Oulu city centre and numbers 21-25 to the ring routes that connect the main routes. The main routes are also included in the [Oulunliikenne.fi](http://Oulunliikenne.fi) web service. From the main routes, the signs will help cyclists find their way to any destination. Cycling is easier and more fluent than ever.

Try new routes and stop by interesting sights!

